

Model 10

Specifications

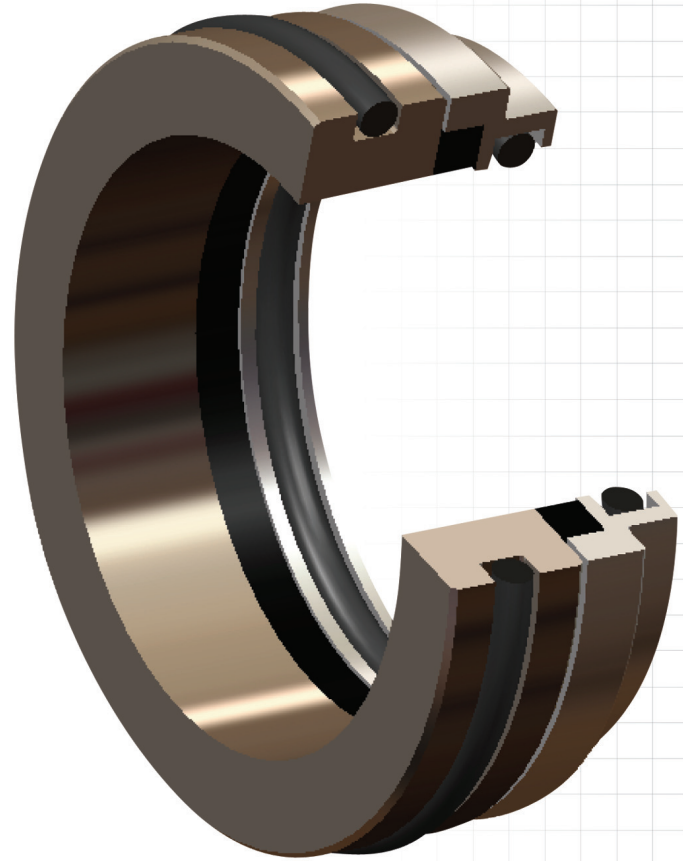
Model 10 – Low Pressure

For use in most applications. Sealing pressure less than 50 PSI depending on size and operating conditions.

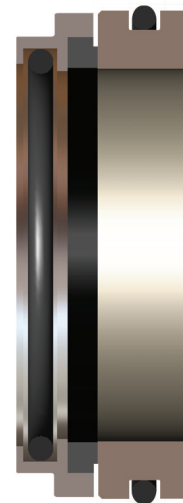
Model 10 Magseals can be manufactured for shafts up to 5 inches in diameter. Consult factory for information.

Note:

Magseals cannot be ordered by size alone. Even in standard configurations materials must be matched to the fluids involved. Please contact our Engineering Department at the earliest practical time during your project, and we will design a seal with materials and features suited to your operating conditions.



Standard Model 10 Assembly



Other Important Parameters		
Maximum housing-bore fillet radius	Up to size 10-40: .005" Size 10-42 and up: .010"	Consult Engineering Dept.
Maximum axial shaft movement (endplay)	.010"	.030
Maximum radial shaft movement (eccentricity)	.005"	.015" or more
Maximum forward pressure (PSID= P_1-P_2)	~ 50 PSID	Consult Engineering Dept.
Maximum reverse pressure (PSID= P_2-P_1)	2 PSID	Consult Engineering Dept.
Shaft surface finish limitations (O-ring position)	Between 32 and 63 μ in Ra	Between 32 and 63 μ in Ra
Housing bore or insulator surface finish (O-ring position)	32 μ in Ra (maximum)	32 μ in Ra (maximum)

see reverse for seal sizes and dimensions



MAGSEAL
Your Partner of Choice in Aerospace

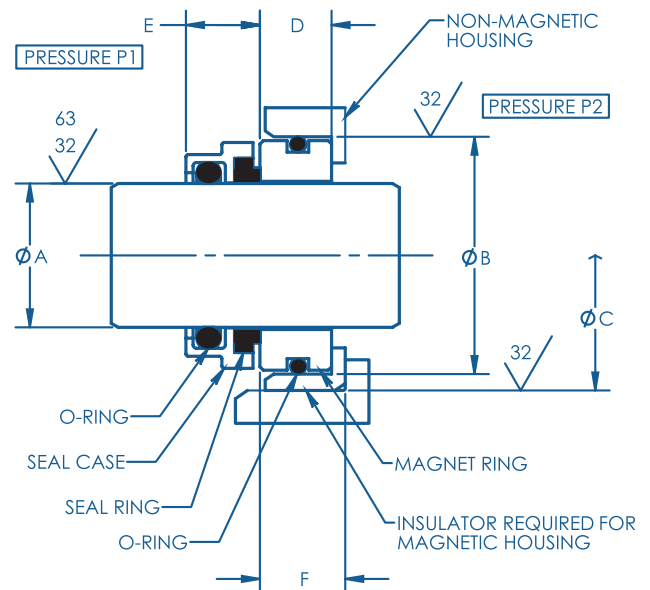
www.magseal.com

Model 10

Specifications

Dimensions In Inches

Seal Size	Shaft Dia.	Bore Dia.	Bore Dia.	D	E	F
	A ± .001	B ± .001	C ± .001			
10-04	.248	.625	.7185	.312	.250	.364
10-05	.310	.6875	.781	.312	.250	.364
10-06	.373	.750	.8435	.312	.250	.364
10-07	.435	.8125	.9375	.312	.250	.379
10-08	.498	.875	1.000	.312	.250	.379
10-09	.560	.9375	1.0625	.312	.302	.379
10-10	.623	1.000	1.125	.312	.302	.379
10-11	.685	1.0625	1.1875	.312	.302	.379
10-12	.748	1.125	1.250	.312	.302	.379
10-13	.811	1.250	1.375	.312	.302	.379
10-14	.873	1.3125	1.4375	.312	.302	.379
10-15	.936	1.375	1.500	.312	.302	.379
10-16	.998	1.500	1.625	.375	.336	.442
10-17	1.061	1.5625	1.6875	.375	.336	.442
10-18	1.123	1.625	1.750	.375	.336	.442
10-19	1.186	1.6875	1.8125	.375	.336	.442
10-20	1.248	1.750	1.875	.375	.336	.442
10-21	1.311	1.8125	2.000	.375	.336	.473
10-22	1.373	1.875	2.0625	.375	.336	.473
10-23	1.436	1.9375	2.125	.375	.336	.473
10-24	1.498	2.000	2.1875	.375	.336	.473
10-25	1.561	2.0625	2.250	.375	.336	.473
10-26	1.623	2.125	2.3125	.375	.336	.473
10-27	1.686	2.1875	2.375	.375	.336	.473
10-28	1.748	2.250	2.4375	.375	.336	.473
10-29	1.811	2.3125	2.500	.375	.336	.473
10-30	1.873	2.375	2.5625	.375	.336	.473
10-31	1.936	2.4375	2.625	.375	.336	.473
10-32	1.998	2.500	2.6875	.375	.336	.473
10-34	2.123	2.6875	2.875	.375	.336	.473
10-36	2.248	2.8125	3.000	.375	.336	.473
10-38	2.373	2.9375	3.125	.375	.336	.473
10-40	2.498	3.0625	3.250	.375	.336	.473
10-42	2.623	3.375	3.625	.500	.453	.625
10-44	2.748	3.500	3.750	.500	.453	.625
10-46	2.873	3.625	3.875	.500	.453	.625
10-48	2.998	3.750	4.000	.500	.453	.625



www.magseal.com